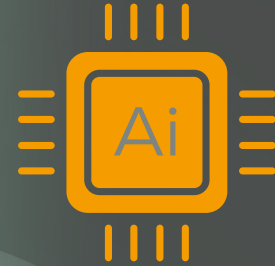


GE Series

UD65ge , UD75ge , UD86ge , UD98ge



DESIGNED FOR
TOMORROW'S
CLASSROOMS &
BOARDROOMS

AI, Innovation &
Interaction in One Display



4K 60Hz
Resolution



Automatic
HDMI wake-up



Power-saving
mode



Upgradable
Android Version 14



OTA Upgradable



EDLE Certification
(Optional)



**DIGITAL
PERFECTION**

- CORPORATE
- SME
- EDUCATION
- COMMERCIAL SIGNAGE

Technology Meets Unmatched Quality

UNIQ Digital is a leading manufacturer of touchscreen technology and interactive software solutions for worldwide. Our expertise in the professional AV industry provides us with an in-depth understanding of the requirements of our clients, and we provide unique interactive solutions designed to make



Product Highlights



17+
Countries



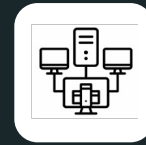
Million
People



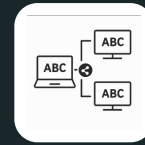
User
Applications



Multi-Platform
Integration



DMS
Built -in
(Optional)



Centralized
Communication
in groups



AI whiteboard &
Collaboration



Wireless
Casting
Features



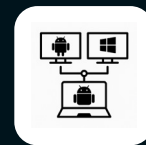
Robust & Reliable
Performance
Design



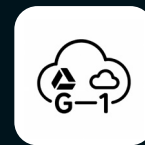
Supplied to
Top Global
Brands



Intelligent
UI at Global
Standards



Centralized
Management



Cloud
Integration
(Optional*)



Auto
Upgrade



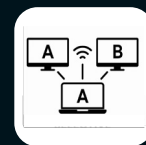
Safe



Warranty



Auto Wakeup



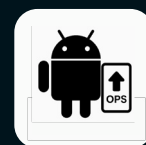
Centralized
Monitoring



Ultra-High
Definition



User friendly
whiteboard
features



Android 14
Upgrade Memory



Easy
Q & A



Professional
Outlook

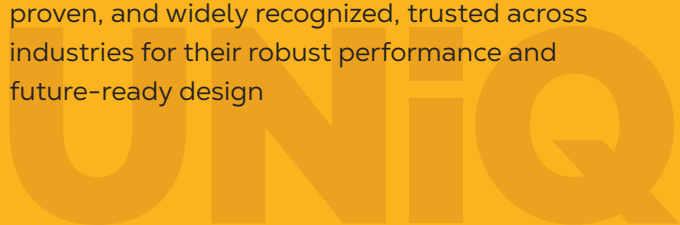
About Product

At UNIQ, in proud association with CVTE – a globally renowned OEM and technology leader in interactive display motherboards

we deliver world-class, high-performance solutions

that reflect international standards, exceptional quality, and unmatched reliability

Our products are technologically advanced, globally proven, and widely recognized, trusted across industries for their robust performance and future-ready design



Hardware & System Features



BYOD & Connectivity

- Supports DLNA, Miracast, AirPlay, Chromecast
- Self-developed apps for wireless casting
- Safe, secure, professional, fast connection



Cloud, Storage & Sharing

- File transfer without PC
- Centralized saving and sharing through platform tools
- Offline work support with sync later



Security & Admin Controls

- Remote control of device for troubleshooting
- Moderator-controlled casting
- User behavior logs & screen time management



DMS (Device Management System)(Optional)

- Centralized Monitoring: Device health, usage reports, real-time alerts
- Centralized Control: Remote power scheduling, reset, and troubleshooting



Teaching Tools (On Demand) (K12 / STEM / Training)

- AI-powered STEM simulation applications
- Periodic table of elements
- PHET STEM simulation integration



Pre-installed Apps & Extras

- WPS application for document viewing/editing
- Visualizer App – snapshot, crop, record, multi-pic modes
- Writing Board App



AI-Powered Utilities

- AI as the engine for brain in the motherboard
- AI Pen with handwriting recognition
- Write-to-search & auto suggestions



Accessibility & Inclusivity

- Text-to-speech & speech-to-text tools
- Colorblind-friendly modes
- Language translation or real-time subtitle support



Energy Efficiency & Health Monitoring

- Auto-brightness adjustment
- Usage analytics environmental impact tracking
- Power-saving modes



User Interface & Personalization

- Customizable user-friendly GUI
- Customizable toolbars & shortcuts
- Customizable audio & video modes

Uniq for Education

At UNI^Q, in proud association with CVTE a globally renowned OEM and technology leader in interactive display motherboards

we deliver world-class, high-performance solutions that reflect international standards, exceptional quality, and unmatched reliability

Our products are technologically advanced, globally proven, and widely recognized, trusted across industries for their robust performance and future-ready design



IDEAL FOR



Digital Classrooms



Classroom Studios



STEM Labs



PHET Simulation Rooms



K-12 Schools

FEATURES FOR TEACHERS & STUDENTS



AI Whiteboard with multi-user annotation



Interactive quizzes and real-time polls



Recording lessons for revision



Screen sharing for student participation



INTERACTIVE WHITEBOARD LEARNING

Advanced whiteboard features and intuitive touch response help make lessons more engaging. Whether it's a science experiment, historical timeline, or a complex math formula students draw, explore, and collaborate better for improved attention, creativity, and comprehension

Uniq for _____ Corporate, SME & Government

UNI*Q* seamlessly Integrates with popular business applications and platforms, streamlining workflows and enhancing productivity for teams across various departments



IDEAL FOR

 <p>Huddle Rooms</p>	 <p>Conference Rooms</p>	 <p>Boardrooms</p>	 <p>Training Halls</p>	 <p>Experience Centers</p>
 <p>War Rooms</p>	 <p>NOC</p>	 <p>SOC</p>	 <p>EOC</p>	 <p>CCC</p>

- **Efficient Meeting Collaboration**

UNI*Q* Interactive Displays transform traditional meetings into collaborative experiences, allowing teams to brainstorm ideas, share content, and make decisions in real-time

- **Versatile Presentation Solutions**

Whether it's a boardroom presentation, a client pitch, or a team training session, UNI*Q* offers versatile presentation tools and features to suit diverse business needs

- **Enhanced Communication**

With UNI*Q*, remote team members can join meetings seamlessly via video conferencing, ensuring effective communication and collaboration regardless of geographical locations

- **Interactive Whiteboarding**

UNI*Q*'s interactive whiteboarding capabilities enable teams to visualize concepts, annotate documents, and ideate collaboratively, fostering creativity and innovation in meetings



About UNIQ

UNIQ is more than a brand it's a promise of precision, trust, and future ready innovation

USA, UAE, KSA, Qatar, Africa, and Singapore ,
UNIQ now proudly marks its entry into India

Our world-class manufacturing facility in India, launched under the Make in India initiative, blends global expertise with local agility delivering international quality, tailored for regional needs

We believe great products start with understanding. At UNIQ, we invest time in learning what our customers need, so we can engineer solutions that truly make a difference. Backed by a 5th generation advanced manufacturing system and a deep commitment to quality, every UNIQ product is designed for durability, performance, & precision. From sourcing high-grade LCD panels to executing strict quality controls, we ensure that what reaches you isn't just a product it's a standard of excellence.



GLOBAL FOOTPRINTS



Technology - So You Can Focus on Performance

At UNIQ, we go beyond manufacturing, we deliver deep technology insight tailored for your specific needs. Our team works hand-in-hand with partners across industries, ensuring that every product is built with a sharp focus on performance, durability, and precision. From ensuring world-class quality, to using precision-driven LCD panels, Electronics, and Apps to investing in next-gen manufacturing systems, every step we take is with your success in mind.



Product Specifications

UD 65" ge | 75" ge | 86" ge

Display

Panel Type	A+ Grade VA
Response Time	3-8 ms
Aspect Ratio	16:9
Display Area	65" 1428.48(H)x803.52(V)mm 75" 1650.24mm(H)x928.26mm(V) 86" 1895.04(H)
Pixel Pitch	65" 0.124(H)*0.372(V)mm 75" 0.14325mm(H)*0.429756mm(V) 86" 0.1645mm(H)*0.4935mm(V)
Resolution	3840(H)x2160(V)
Max Refreshing Frequency	Supports Up to 120Hz
Display Color	1.078Billion Colours (10bit)
NTSC	85%
Contrast Ratio Typical	5000:1
Contrast Ratio Dynamic	200000:1
Viewing Angle	178°(H/V)
Back Light Unit	DLED with latest even beam distribution layer technology Real
Colour Reproduction	Colour Technology Adjustable
Max Brightness with glass	< 600 Nits
Brightness Control	User adjustable / Auto
Display LED Max. Life Time	122000Hrs
Operating Hours	22x7 greatly with evenly distributed rest intervals and conditions

Touch System

Sensing Type	Advanced IR
System Technology	V100 as standard (MT9679 as Optional)
Touch Tool	Ergonomically Designed Stylus
Accuracy	±1.5mm
Touch Point	40 touch points
Minimum Object Size	3mm
Writing Height	≤ 3mm
Touch Response	3mm
Surface	3mm Hard Touch H8 Smooth, Antiglare & Antifinger Print
System	Windows 10/8/7/ Windows XP/Android/ Mac OS X/Chrome OS
Blue tooth	

Accessories

Power Cord	1 x 3m
HDMI Cable (Optional)	1 x 3m
USB Touch Cable	1 x 3m
Remote Control	1
Writing Pen	2

I/O Connectivity

HDMI IN	3
HDMI OUT	1
HDMI Resolution Support	4K 60Hz
USB 2.0	2
USB 3.0	3
USB Type-C	1
TOUCH 2.0	2
Wi-Fi & Hotspot	1
AUDIO IN	1
AUDIO OUT	1
SPDIF	1
RS232	1
RJ45 IN	1
OPS Provision	1
MIC (Optional)	1

Environmental Conditions

Operation Temperature	0°C~40°C
Operation Humidity	10%~90%RH
Storage Temperature	-20°C~60°C
Storage Humidity	10%~80%RH
Altitude	Below 5000M

Operating System

Motherboard	V100 /MT9679 - Optional
System Version	Android 14
RAM	8GB
ROM	128GB
CPU	ARM Cortex A55 X 8Core
GPU	ARM Cortex Mali G52mc1 X Core

Power

Power Requirements	100-240V~50/60Hz
Standby Power	<0.5W

Audio

Sound Channel	2 Super Drivers
Output Power	2 x 20 w

Modules

Wifi Module	SIO7B
PC Module	OPSB2A (Optional)

Product Specifications

98"

Display

Size	98 inch
System Technology	CVTE
Panel Type	A+ Grade VA
Response time	3-8 ms
Aspect Ratio	16:9
Display Area	215/:848 (H) x 1214.352 (V) mm
Pixel Pitch	0.5622 x 0.5622 mm
Resolution	3840 (H) x 2160 (V)
Refreshing Frequency	60 Hz
Display Color	1.07 B (10bit):
NTSC	72%
Contrast Ratio	1200:1
Viewing Angle	178° (H/V)
Back Light Unit	DLED
Brightness with glass (min)	400 Nits
Brightness with glass (typ)	500 Nits
Life Time	50000 Hours

Touch System

Sensing Type	IR
System Technology	CVTE 9679
Touch Tool	Passive IR Stylus
Accuracy	+/-1.5mm
Touch Point	40 touch points
Minimum Object Size	3mm
Writing Height	-< 3mm 3mm
Touch Response	
Surface	Hard, Touch, Smooth, Antiglare & Anti finger Print
System	Windows10/8/7/ Windows XP/Android/ Mac OS X/Chrome OS

Audio

Sound Channel	2
Output Power	2 x 20 w

I/O Connectivity

HDMI IN	3
HDMI OUT	1
USB 2.0	1
USB 3.0	4
USB Type-C	1
TOUCH 2.0	2
VGA IN	1
AUDIO IN	1
AUDIO OUT	1
SPDIF	1
RS232	1
RJ45 IN	1
RJ45 OUT	1

Environmental Conditions

	Altitude
Operation Temperature	0°C~40°C
Operation Humidity	10%~90%RH
Storage Temperature	-20°C~60°C
Storage Humidity	10%~80%RH
	Below 5000M

Accessories

Power Cord	1 x 3m
HDMI Cable	1 x 3m
USB Touch Cable	1 x 3m
Remote Control	1
Writing Pen	2

Operating System

Motherboard	T982 (latest version)
System Version	Android 14
RAM	8GB
RAM On Boarded	128 GB
<small>(With-Out any additional SD / Memory devices)</small>	
CPU	CVTE 9679 Mother Board with ARM Cortex Quad A73
GPU	CVTE Mother Board with Mali G52MC1

Power

Power Requirements	100-240V~50/60Hz
Standby Power	<0.5W

Modules

Wifi Module	SIO7B
PC Module	OPSB2A (Optional)

Applications



Auditorium



NOC / SOC / CCC



Conference-Room



Town Hall



Training Hall

Prestigious Lineup of Cutting-Edge Professional AV Products

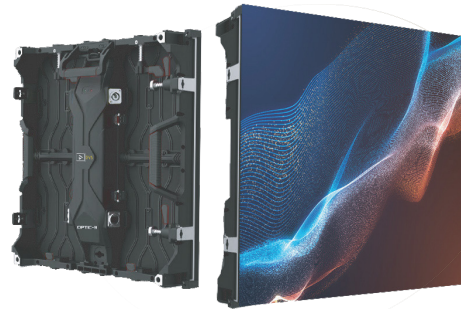
Ai Interactive Displays

AiO | Pro | Education Series



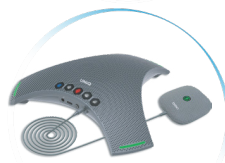
Active LED Video Wall

Indoor & Outdoor LED Walls CoB, GOB, and Custom Pixel Pitch Options



Video Conferencing Products & Professional Cameras

From AI Video Bars to PTZ Cameras
AiO Video Bars | AiO PTZ Video Bars
PTZ Cameras | Speakers Phone Conferencing | Microphones | DSP



AV Interface Products

Extenders – CAT6 Wireless | Point-Point
KVM Extenders | Over-IP Matrix &
Splitter Cum Extenders Splitters
Switchers | Matrix



Disclaimer

- Specifications, features, visuals, and models are subject to change without notice.
- Product availability and features may vary by region.
- Colours/images shown are for reference only; actual product may differ.
- Warranty terms vary by model and region—refer to official documentation.
- We recommend staying updated via our official channels for the latest info.
- Performance may improve with software/firmware updates.
- All trademarks belong to their respective owners.
- We are not liable for typographical or illustrative errors.
- Please dispose of products responsibly as per local e-waste norms.
- Data (if applicable) is handled per our privacy and regulatory compliance.
- No liability is assumed for indirect or consequential damages

UNI
DIGITAL

UNIQ DIGITAL LTD

Kemp House 160 city Road, London, EC1V2NX. | Phone: +442034767436
Email: info@digitaluniq.com | Web: www.digitaluniq.com
Web: www.uniqint.com

UK | USA | UAE | KSA | QATAR | AFRICA | SINGAPORE | INDIA